

## SUBMITTAL SHEET

|                   |             |
|-------------------|-------------|
| JOB NAME          | ITEM TAG    |
| JOB LOCATION      | PART NUMBER |
| CONTRACTOR        | DATE        |
| ENGINEER APPROVAL | DATE        |

## CHROME PLATED STEAM AIR VENTS

### T-60, T-60A, T-61, T-63 and T-65

The reliable float-and-stem design make them ideal for all low-pressure, non-vacuum residential and commercial steam heating systems.

Angle configurations are typically installed at the top of a steam radiator, for the purpose of venting trapped air by means of steam displacement.

Straight configurations can be installed onto radiators or within the system, for branch or main\* venting functions (\*multiple vents may be required for this type of installation).

Premium chrome-plated finish is durable, decorative and functional; all configurations are fully-plated and are more resistant to moisture staining and damage than unplated vents.

The adjustable T-60A is capable of slow, medium or fast venting, to accommodate extreme variations in room temperatures, such as colder rooms with radiators located farthest from the boiler, to hotter rooms with radiators located closest to the boiler.

Available in nominal sizes 1/8", 1/4", 1/2" and 3/4" NPT connections.

#### Working Pressure, Non Shock (PSI)

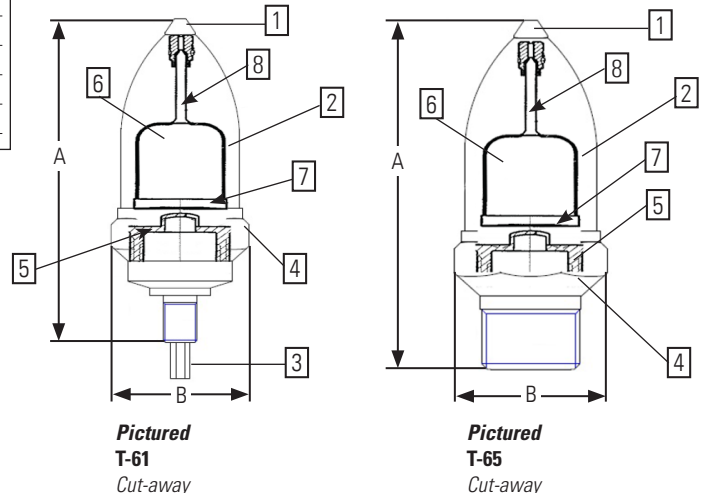
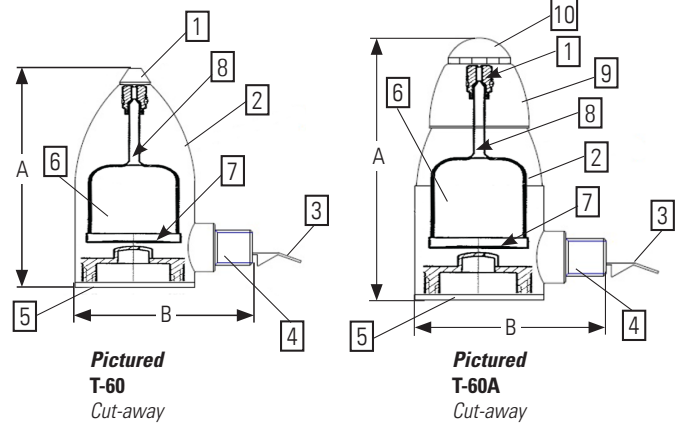
Cold working pressure (CWP): Not suitable for hot water heating system's air removal

Saturated steam (WSP):

|  |            |
|--|------------|
| Maximum, all models:                           | 10 p.s.i.  |
| Drop-away pressures, T-60, T-61, T-63, & T-65: | 6 p.s.i.   |
| Drop-away pressure, T-60A adjustable:          | 1.5 p.s.i. |



- End connections conform to ANSI / ASME B1.20.1
- Manufactured in an ISO accredited facility.



#### MATERIAL SPECIFICATION

| PART                              | MATERIAL   | SPECIFICATION        |
|-----------------------------------|--|----------------------|
| 1 Stem seat                       | Forged brass   | ASTM B16 UNS C36000  |
| 2 Body                            | Brass, chrome plated                                   | ASTM B36 UNS C26800  |
| 3 Condensate drip-tongue          | Brass, chrome plated                                   | ASTM B36 UNS C26800  |
| 4 End adapter                     | Forged brass, chrome plated                            | ASTM B124 UNS C37700 |
| 5 Float pedestal                  | Forged brass (models T-60 and T-60A are chrome-plated) | ASTM B124 UNS C37700 |
| 6 Float body                      | Brass  | ASTM B36 UNS C26800  |
| 7 Float baseplate                 | Phosphor bronze  | ASTM B103 UNS C51180 |
| 8 Stem                            | Forged brass   | ASTM B16 UNS C36000  |
| 9 Vent collar (Model T-60A only)  | Brass, chrome plated                                   | ASTM B36 UNS C26800  |
| 10 Collar lock (Model T-60A only) | Forged brass   | ASTM B16 UNS C36000  |

#### DIMENSIONS

| Nominal Size, NPT                   | A    | B    |
|-------------------------------------|------|------|
| 1/8" MNPT T-60 angle                | 2.52 | 1.97 |
| 1/8" MNPT T-60A angle, adjustable   | 3.29 | 2.02 |
| 1/8" MNPT T-61 straight             | 3.64 | 1.50 |
| 1/4" MNPT T-63 straight             | 3.72 | 1.50 |
| 3/4" MNPT x 1/2" FNPT T-65 straight | 3.68 | 1.61 |